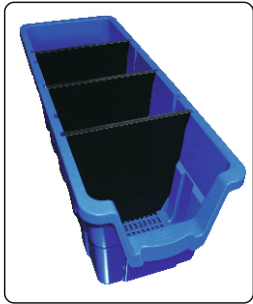


NEW
Arrivals

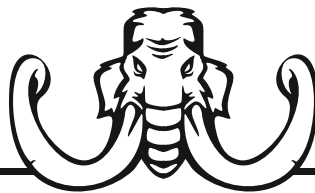
ALKON®

MATERIAL HANDLING - ESD - OFFICE PRODUCTS

PRODUCT CATALOG 2021-22

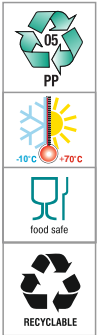
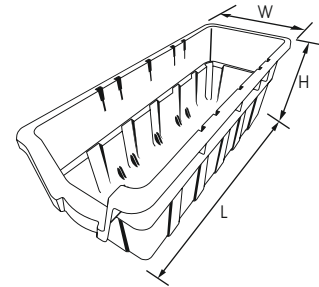


The right storage solution for every need



MAMMOTH BIN - MESH & SOLID





- Mammoth Bins are made from Polypropylene Co-polymer and are essentially made for storage of your large and bulky items or to store larger quantities of the same product in a warehouse or a distribution centre.
- Mammoth Bins are ideal for use on heavy-duty pallet racking systems fitted with mesh decking or decking panels on the beams or for use on extra deep shelving units.
- Mammoth Bins make picking of products in the warehouse more efficient by having more product available to the order picker.
- Mammoth Bins are available with a Solid Base Art No. AM83S or with a Mesh Base Art No. AM83M.
- Mammoth bins with the Solid Base are used for storage of products which may be liquid based or where the size of the product is very small and need to be contained within the bin.
- Mammoth Bins with the Mesh Base facilitates water to pass through in a warehouse fitted with a sprinkler system and helps to meet fire safety compliance in a warehouse or workplace. In this way water is not accumulating in the bin and passes through to lower levels.
- Mammoth Bins have a large front opening for easy access of the products stored in the bin and for good product visibility.
- Mammoth Bins have an ergonomically designed handle which allows the bin to slide in and out of the racking system helping warehouse employees to pick orders more safely and efficiently.
- Both Solid Base and Mesh Base Mammoth Bins have a reinforced base for added strength and load bearing.
- Mammoth Bins have a large flat front face for adhering standard identification labels.
- Mammoth Bins have lockable provisions made in the bin itself to be used with horizontal partitions in such a way that the bin can be divided into two compartments with the use of one partition, three compartments with the use of two partitions or four compartments with the use of three partitions. The partitions lock into the sidewalls but are removable if required to alter the space within the bin itself.
- Mammoth Bins can also be stacked on top of each other using three ergonomically designed risers which fit in the partition slots provided in the bin. This allows the bins to be used more efficiently with longer items. We recommend stacking the bins to a maximum of 3 high. When the bins are double stacked they can hold 15 kgs UDL per bin and when the bins are three stacked then they can hold 10 kgs UDL per bin.



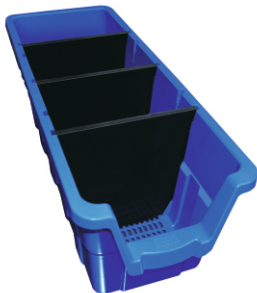
AM83M



AM83S

Art No	: AM83M
Art No	: AM83S
Outside Dimensions in mm	: 820 (L) x 315 (W) x 300 (H)
Inside Dimensions in mm	: 740 (L) x 250 (W) x 290 (H)
Effective Height in mm	: 175
Standard Packing	: 8 pcs. per ctn.
Volume Per Box CBM	: 0.209
Slots for Partition	: 5
Colour	: Blue

All dimensions in mm approx.



AM83M
with 3 Partitions

Partition

Horizontal Partition for AM83S & AM83M
Art No.: HP AM83
Standard Pkg. : 16 pcs per ctn.
Colour : Black



AM83S
with 3 Risers

Riser

Riser for AM83S & AM83M
Art No.: AM83 R
Standard Pkg. : 12 pcs per ctn.
Colour : Black



Nesting

Nesting

Mammoth Bins are designed to nest inside one and other to save space when storing the bins and during transportation of the bins. By nesting the space saved is more than 70 % during transportation which makes the movement of these bins more economical in comparison to stacking bins which do not nest.